

\$364,900 - 7328 181 Street, Edmonton

MLS® #E4461271

\$364,900

3 Bedroom, 1.50 Bathroom, 1,167 sqft

Single Family on 0.00 Acres

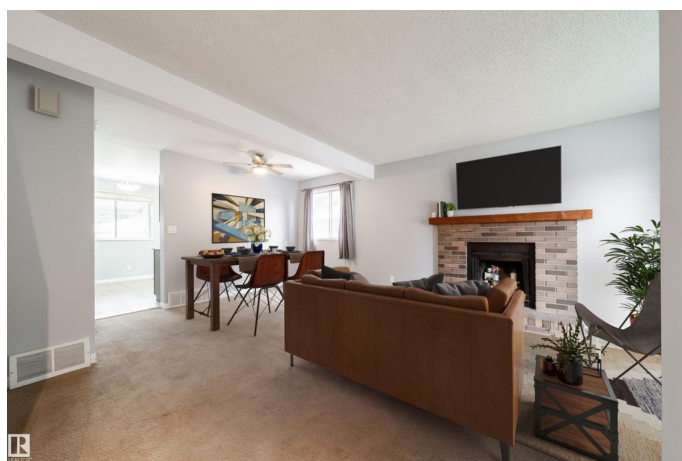
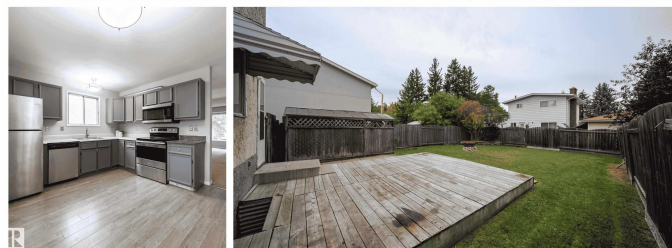
Lymburn, Edmonton, AB

A perfect starter home or investment opportunity in the desirable west-end community of Lymburn, just minutes from West Edmonton Mall, parks, schools, public transit, and the YMCA. This bright, well-kept home features a spacious open-concept living and dining area, perfect for family gatherings. The refreshed kitchen offers newer stainless steel appliances (2019+), ample cupboard and pantry space, and access to a large fenced backyard with a deck, fire pit, and storage shed. Upstairs are three generous bedrooms, including a large primary suite with a full wall of closets. The basement is partially finished with a rec room, laundry, rough-ins for a future bathroom, and tons of storage. Enjoy the convenience of a long front driveway with extra parking. Recent updates include a new roof (2020) and a new hot water tank (2024). Affordable, functional, and located in a family-friendly neighbourhood, this home is move-in ready and full of potential.

Built in 1982

Essential Information

MLS® #	E4461271
Price	\$364,900
Bedrooms	3
Bathrooms	1.50



Full Baths	1
Half Baths	1
Square Footage	1,167
Acres	0.00
Year Built	1982
Type	Single Family
Sub-Type	Detached Single Family
Style	2 Storey
Status	Active

Community Information

Address	7328 181 Street
Area	Edmonton
Subdivision	Lymburn
City	Edmonton
County	ALBERTA
Province	AB
Postal Code	T5T 2H1

Amenities

Amenities	Closet Organizers, Deck, Detectors Smoke, No Smoking Home
Parking Spaces	3
Parking	Front Drive Access

Interior

Appliances	Dishwasher-Built-In, Dryer, Microwave Hood Fan, Refrigerator, Storage Shed, Stove-Electric, Washer
Heating	Forced Air-1, Natural Gas
Stories	3
Has Basement	Yes
Basement	Full, Partially Finished

Exterior

Exterior	Wood, Stucco
Exterior Features	Fenced, Level Land, Playground Nearby, Public Swimming Pool, Public Transportation, Schools, Shopping Nearby
Roof	Asphalt Shingles
Construction	Wood, Stucco
Foundation	Concrete Perimeter

Additional Information

Date Listed October 8th, 2025
Days on Market 1
Zoning Zone 20

DATA IS DEEMED RELIABLE BUT IS NOT GUARANTEED ACCURATE BY THE REALTORS® ASSOCIATION OF EDMONTON. COPYRIGHT 2025 BY THE REALTORS® ASSOCIATION OF EDMONTON. ALL RIGHTS RESERVED.Trademarks are owned or controlled by the Canadian Real Estate Association (CREA) and identify real estate professionals who are members of CREA (REALTOR®, REALTORS®) and/or the quality of services they provide (MLS®, Multiple Listing Service®)
Listing information last updated on October 9th, 2025 at 12:32am MDT