

# \$0 - 10556a 82 Avenue, Edmonton

MLS® #E4451249

**\$0**

0 Bedroom, 0.00 Bathroom,  
Retail on 0.00 Acres

Strathcona, Edmonton, AB

Exceptional high exposure and shoppers traffic location in Edmonton most desirable business and residential mixed district of Old Scona-Whyte Ave, just a perfect place for retail, professional office, health related clinic, pharmacy & more. Approximately 1138 Sq.Ft. of complete open floor space (minimum demolition),handicap accessible washroom, large store front windows & plenty of on street parking. It's a fantastic opportunity to start your new business venture or expand existing business in a highly sought after and high value location.

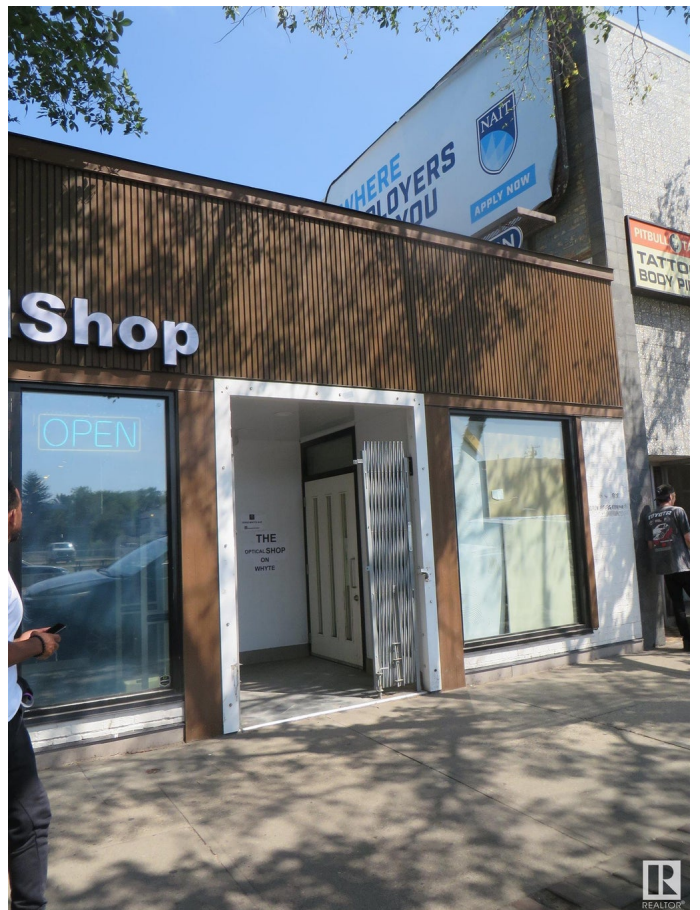
Built in 1972

## Essential Information

MLS® #	E4451249
Lease Rate	\$36
Bathrooms	0.00
Acres	0.00
Year Built	1972
Type	Retail
Status	Active

## Community Information

Address	10556a 82 Avenue
Area	Edmonton
Subdivision	Strathcona



City	Edmonton
County	ALBERTA
Province	AB
Postal Code	T6E 2A4

### **Exterior**

Exterior	Block
Construction	Block

### **Additional Information**

Date Listed	August 3rd, 2025
Days on Market	54
Zoning	Zone 15

DATA IS DEEMED RELIABLE BUT IS NOT GUARANTEED ACCURATE BY THE REALTORS® ASSOCIATION OF EDMONTON. COPYRIGHT 2025 BY THE REALTORS® ASSOCIATION OF EDMONTON. ALL RIGHTS RESERVED. Trademarks are owned or controlled by the Canadian Real Estate Association (CREA) and identify real estate professionals who are members of CREA (REALTOR®, REALTORS®) and/or the quality of services they provide (MLS®, Multiple Listing Service®)

Listing information last updated on September 26th, 2025 at 9:02am MDT