

Courtesy Of Brian C Cyr Of RE/MAX Elite

\$399,900 - 29 150 Everitt Dr, St. Albert

MLS® #E4450863

\$399,900

4 Bedroom, 2.50 Bathroom, 1,435 sqft
Condo / Townhouse on 0.00 Acres

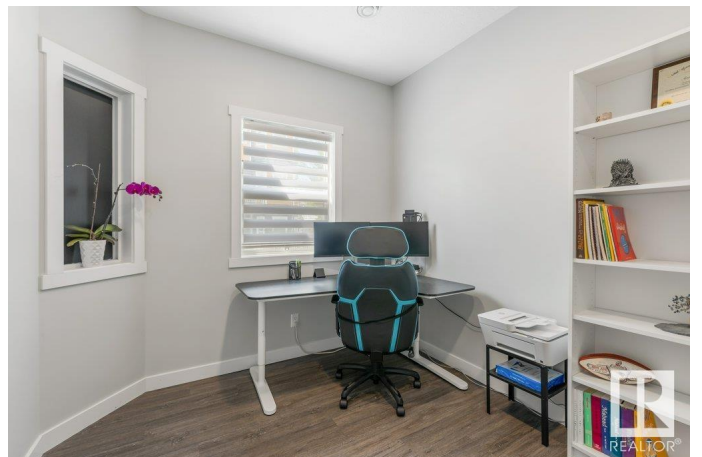
Erin Ridge North, St. Albert, AB

Welcome to Valencia on the Park! This stylish 4-bed, 2.5-bath townhouse offers upscale finishes, a double attached garage, a double driveway and A/C. The entry level features a versatile 4th bedroom—perfect for a home office or guests. The open-concept main floor boasts a chef-inspired kitchen with white cabinetry, quartz counters, Stainless Steel appliances, a large island and a modern sliding barn door to the powder room. Enjoy two private balconies—one off the kitchen and one off the living room. Upstairs, find 3 bedrooms, including a bright primary suite with large windows, walk-in closet, 3-pc ensuite, plus a 4-pc family bath and upper laundry. Located near schools, shopping, groceries, and scenic trails, this move-in-ready home has it all!

Built in 2021

Essential Information

MLS® #	E4450863
Price	\$399,900
Bedrooms	4
Bathrooms	2.50
Full Baths	2
Half Baths	1
Square Footage	1,435
Acres	0.00



Year Built	2021
Type	Condo / Townhouse
Sub-Type	Townhouse
Style	3 Storey
Status	Active

Community Information

Address	29 150 Everitt Dr
Area	St. Albert
Subdivision	Erin Ridge North
City	St. Albert
County	ALBERTA
Province	AB
Postal Code	T8N 7R8

Amenities

Amenities	Ceiling 9 ft., Deck
Parking	Double Garage Attached

Interior

Interior Features	ensuite bathroom
Appliances	Air Conditioning-Central, Dishwasher-Built-In, Dryer, Hood Fan, Refrigerator, Stove-Electric, Washer, Window Coverings
Heating	Forced Air-1, Natural Gas
Stories	3
Has Basement	Yes
Basement	None, No Basement

Exterior

Exterior	Wood, Vinyl
Exterior Features	Fenced, Landscaped, Playground Nearby, Schools
Roof	Asphalt Shingles
Construction	Wood, Vinyl
Foundation	Concrete Perimeter

Additional Information

Date Listed	August 1st, 2025
Days on Market	47
Zoning	Zone 24

Condo Fee \$262

DATA IS DEEMED RELIABLE BUT IS NOT GUARANTEED ACCURATE BY THE REALTORS® ASSOCIATION OF EDMONTON. COPYRIGHT 2025 BY THE REALTORS® ASSOCIATION OF EDMONTON. ALL RIGHTS RESERVED. Trademarks are owned or controlled by the Canadian Real Estate Association (CREA) and identify real estate professionals who are members of CREA (REALTOR®, REALTORS®) and/or the quality of services they provide (MLS®, Multiple Listing Service®)

Listing information last updated on September 16th, 2025 at 10:02pm MDT